

*Al mio carissimo Mario nel suo primo compleanno*

Sw.  
(or any other manual): { Strings 8' suboctave and super-  
octave (soft mixture) Tremulant

Ped.: Bourdon 16'

# La Concertina

Suite Umoresca

INTRODUCTION

Lento

I

PIETRO A. YON

Manual

Sw. closed

Pedal

Allegretto

[www.bnote.de](http://www.bnote.de)

## II

## Tempo di Valzer lento

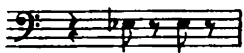
*legatissimo*

Sw. reduce to Vox Humana Sw.(4 & 16)

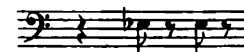
\*

[www.bnote.de](http://www.bnote.de)

\* Marcare il ritmo col movimento del pedale espressivo aprendo per l'accento del secondo e terzo quarto di ogni misura. Se il pedale espressivo non funziona, marcare il tempo col mib al pedale



Mark the rhythm with the use of the swell pedal, opening for the accent on the 2nd and 3d beats of each measure; should the swell pedal not respond promptly, mark the rhythm with Eb in pedal i.e.



# III

Allegro vivace

Sw. add Strings 8', Bourdon 16'

(1st time) closed

(2d time) open

This system contains the first system of music. It features three staves: a grand staff (treble and bass clefs) and a separate bass line. The music is in 2/4 time with a key signature of two flats. The first staff has fingering numbers 3, 1, 2, 1, 4, 2, 2, 1, 3, 1, 2, 1, 4, 2, 3, 1 above it. The first staff is marked '(1st time) closed' and the second '(2d time) open'. The text 'Sw. add Strings 8', Bourdon 16'' is written between the first and second staves. The bass line consists of quarter notes with rests.

www.bnote.de

This system contains the second system of music. It features three staves: a grand staff and a separate bass line. The music continues from the first system. The first staff has fingering numbers 4, 2, 4, 2, 3, 1, 3, 1, 3, 1, 2, 1, 3, 1, 4, 2, 3, 1, 3, 1, 3, 1, 2, 1 above it. The bass line has accents (^) under the first four notes.

This system contains the third system of music. It features three staves: a grand staff and a separate bass line. The music continues from the second system. The first staff has fingering numbers 3, 1, 2, 1, 4, 2, 4, 2, 3, 1 above it. The bass line continues with quarter notes and rests.