

**HARVEY GRACE**

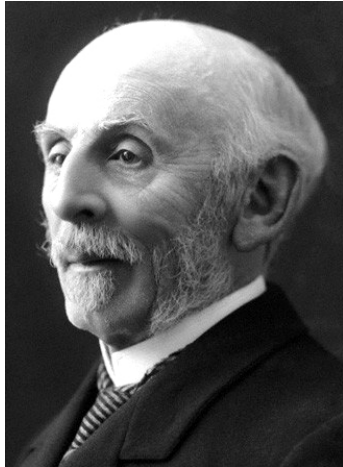
# Ausgewählte Orgelwerke

Selected organ works

[www.bnote.de](http://www.bnote.de)

BN-16904

**BNOTE**  
MUSIKVERLAG  
[www.bnote.de](http://www.bnote.de)



Harvey Grace war ein britischer Organist und Komponist. Er erhielt seine Ausbildung bei Madeley Richardson an der Kathedrale von Southwark und wurde Organist an St. Mary Magdelene in London. Er schrieb zu Lebzeiten sehr beachtete Orgelmusik für Konzert und Gottesdienst und machte sich als Redakteur der „Musical Times“ einen Namen in der britischen Musikwelt. Von 1939 bis zu seinem Tod war er Lehrer am Londoner Trinity College of Music .

# HARVEY GRACE

1874-1944

## Ausgewählte Orgelwerke

Selected organ works

### THREE PSALM TUNE PRELUDES

1. Martyrs ..... 3
2. London New ..... 7
3. The Old Hundreth ..... 11

Rhapsody op. 17/1 ..... 16

### TWO MONOLOGUES

1. Meditation ..... 27
2. Caprice ..... 33

[www.bnote.de](http://www.bnote.de)

Gestatteter Nachdruck der Erstausgabe / Allowed reprint of the first edition  
(Novello, London, 1915-1917)

Verzeichnet in der Deutschen Nationalbibliothek  
Nähere bibliografische Informationen unter [www.dnb.de](http://www.dnb.de)

Recorded in the German National Library  
Further bibliographical details on [www.dnb.de](http://www.dnb.de)

BN-16604  
[www.bnote.de](http://www.bnote.de)

**BNOTE**  
MUSIKVERLAG

To Geoffrey Shaw.

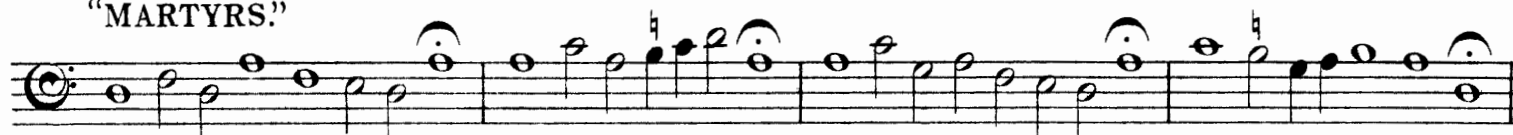
# THREE PSALM TUNE POSTLUDES.

## I. MARTYRS.

Harvey Grace.

Theme to be played with Diapasons. 8 ft!  
"MARTYRS."

Original form of melody,  
from the Scottish Psalter, 1635.



With rough vigour.  $\text{♩} = \text{about } 72.$

MANUAL.

**ff**  $\text{G}\sharp$  Full without Reeds,  
Full Sw. coupled.

(box closed)

PEDAL.

**ff**

[www.bnote.de](http://www.bnote.de)

open Sw. & fix

# II. LONDON NEW.

*Broad and vigorous.*  $\text{♩} = 112.$   
G<sup>t</sup> Diapasons 16, 8 & 4 ft with Sw. 8 & 4 ft coupled

MANUAL.

*f*

PEDAL.

*f*

[www.bnote.de](http://www.bnote.de)

*retard -*

Solo Tuba

### III. THE OLD HUNDREDTH.

*Festive. ♩ = about 80.*

MANUAL.

*ff* G<sup>t</sup> with Full Sw.  
(box closed)

PEDAL.

\* If a powerful pedal reed is available, only the lower notes of the pedal octaves should be played, and the swellbox gradually opened during bars 10-13 and in similar passages.

To Miss Katharine S. Jones.

# RHAPSODY.

Harvey Grace, Op. 17. N<sup>o</sup> 1.

Sw. 8ft Solo stop.  
G! Soft 8ft  
Ch. Soft 8ft  
Ped. Soft 16ft  
Sw. to G!  
Ch. to Ped.

*Moderato.  
espressivo*

MANUAL.

*mp* Sw.

*p* Ch.

PEDAL.

To my brother W. F. Grace.

# MONOLOGUES.

## I.

### MEDITATION.

(In ancient tonality)

Harvey Grace

Sw. Soft 8 & 4 ft  
 G! Soft 8 ft  
 Ped. Soft 16 & 8 ft  
 Sw. to G!  
 Sw. to Ped.  
 G! to Ped.

*Moderately fast, with expression. ♩. = about 52.*

MANUAL.

*p* G!

PEDAL.

To Fred J. Buckle.

II.  
CAPRICE.

Harvey Grace.

Quiet but bright  
registration throughout.

Sw. *mp*

G† *mf*

Ch. Clarinet & 4 f† Flute

Ped. Soft 8 & 16 f†

Sw. to G†

Sw. to Ped.

♩. = about 68-80.

MANUAL.

*mp* Sw.

PEDAL.

PEDAL.

PEDAL.

*mp*

G† to Ped.